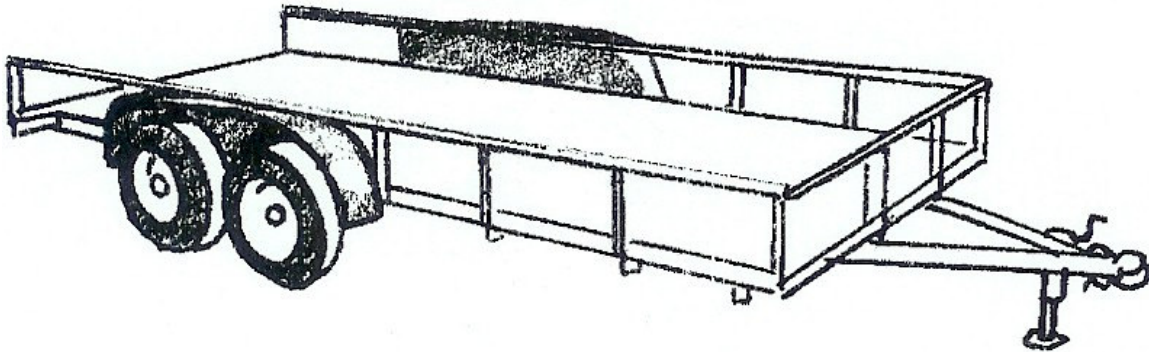
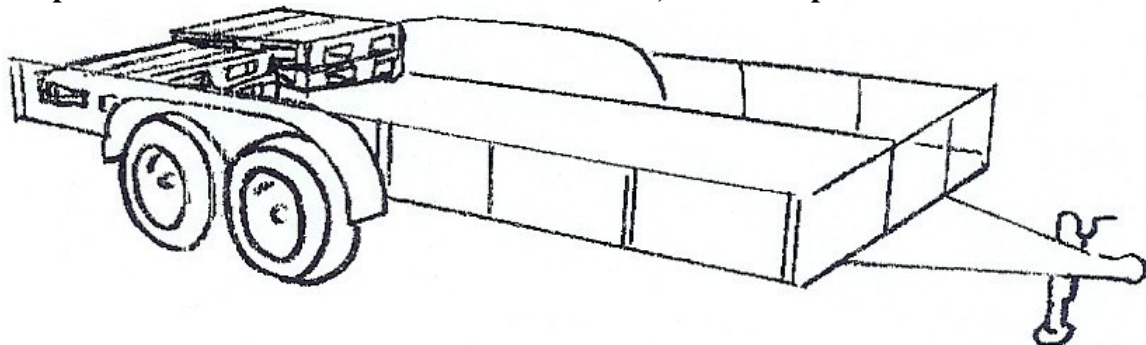


Low boy trailer directions

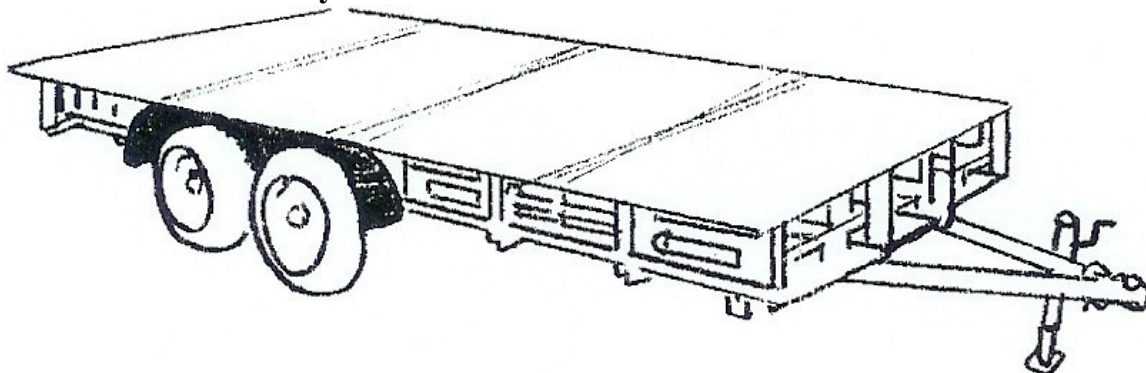
- 1) Find a platform that is sturdy, safe and legal for tow... Low boy trailer's can be converted and are a reliable float bed.



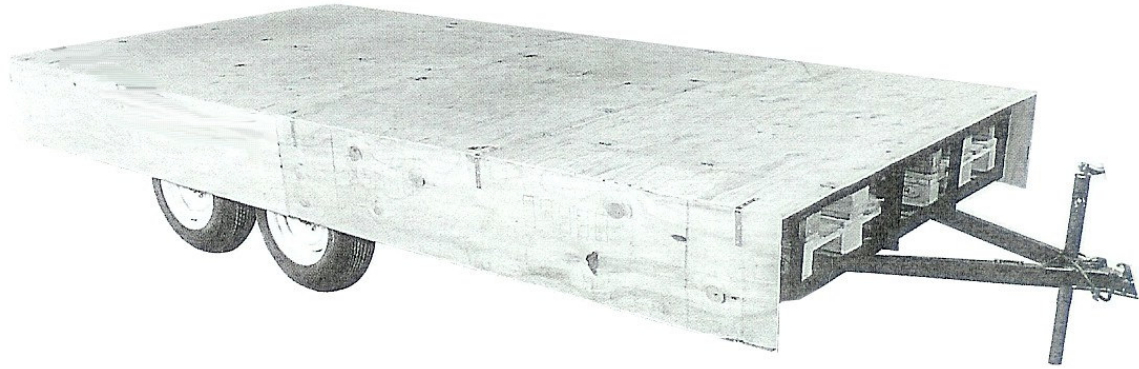
- 2) Find pallets approximately the same height as the trailers, you may have to stack pallets on top of one another or shim the pallets to the correct height. Anchor the pallets to the trailer bed with screws or nails, to hold in place.



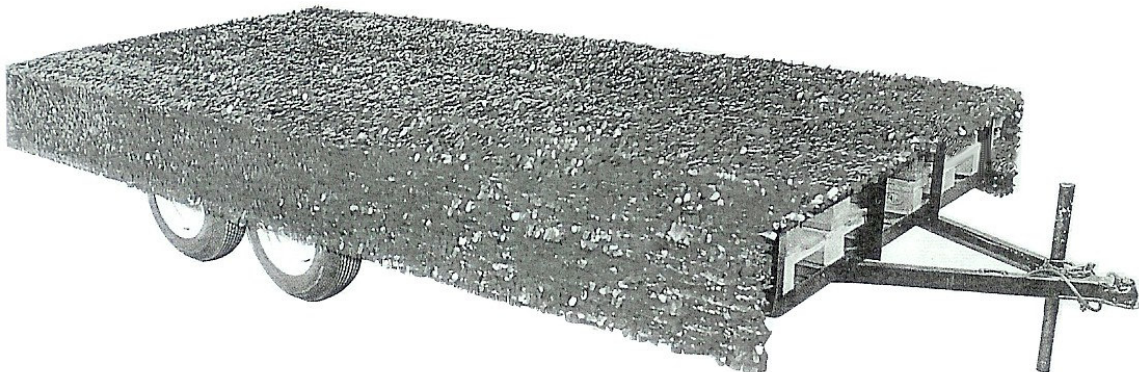
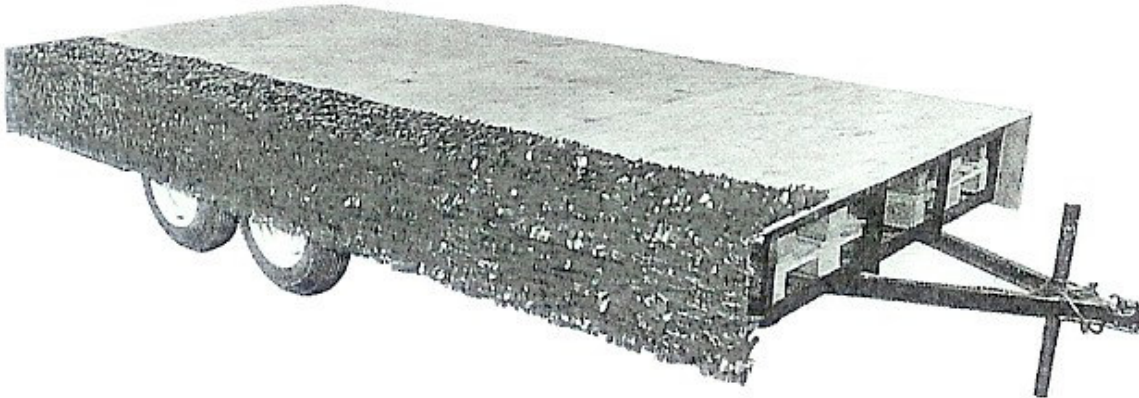
- 3) Check for proper height by applying 4' x 8' plywood over secured pallets. (NOTE: plywood should be 1/2" or more thick). Check to make sure you have sufficient clearance for tires and fenders. Center plywood and secure with screws or nails, continue forward until you have secure solid deck.



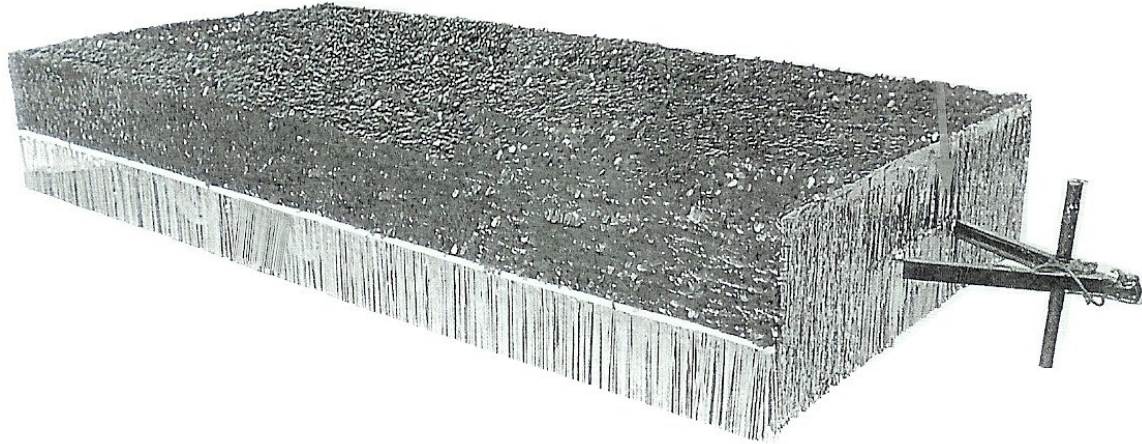
4) Apply sides to deck... Use “L” shaped brackets available at most hardware stores. Apply wood skirts to top of wood deck with “L” brackets; sides should remain 14” from bottom of side deck to the ground. If you plan on towing your float long distances or for multiple parades, use hinges to apply side walls and you can fold up during transportation, this will protect the fringe and materials during transport.



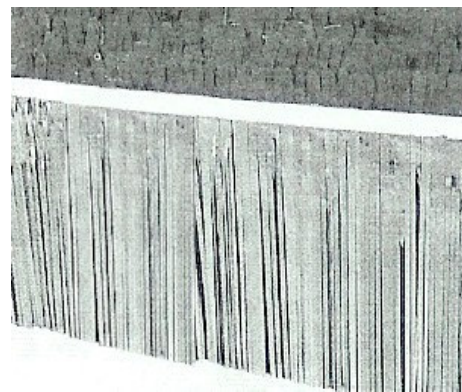
5) Now you're ready to begin decorating your float bed. Run sheeting length wise along trailer to reduce visible seams. Apply vinyl sheeting to the deck with staples. Make sure sheeting is secure around corners and any props or displays you may have on your float.



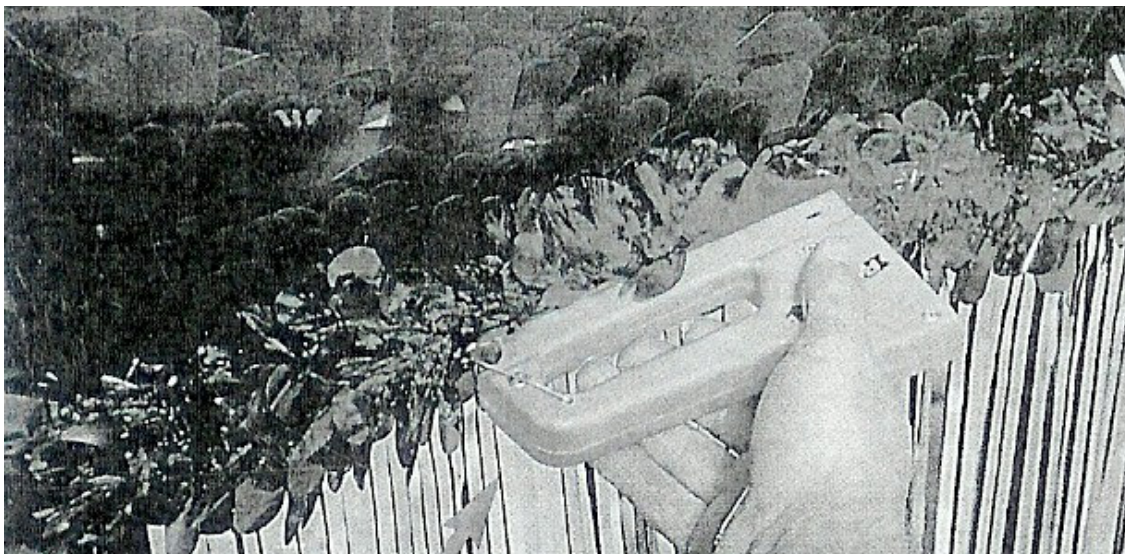
6) Next apply the fringe to the bottom of the deck. Fringe hides the under carriage of the parade float. Fringe has a 14" drop and will leave approximately 1/4" from the ground when applied. Note: 30" drop fringe can be applied to the front and back of the float you choose to bypass walls.



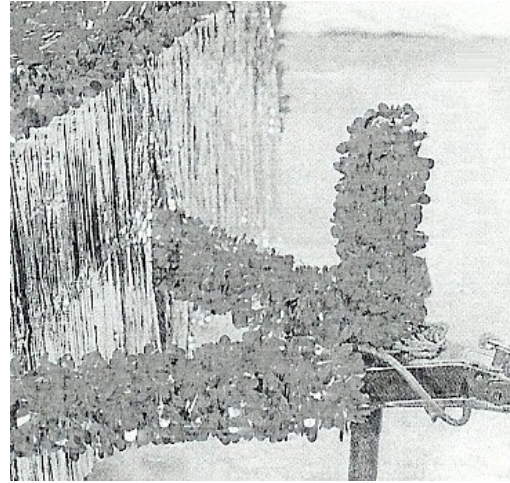
Staple through the white cotton header to the plywood side to apply the fringe. Fringe will be approximately 1/4" from the ground.



7) Using a stapler apply festooning over the top of the fringe to hide the white cotton header.



8) Festooning is a great way to accent your float, apply around corners, signs, and around the trailer hitch.



Congratulations! You have created a parade float, You can now apply displays and signs, presenting your company or organization.



224 West Wabasha St. / Duluth, MN 55803 / Phone & Fax: 218-724-2635

Visit us online at: www.crs-enterprises.com